

# The Diver Solution

---

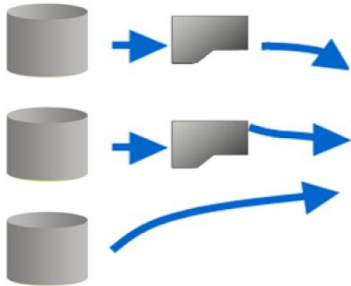
- Business Intelligence Solution
  - Dimensional Insight The logo for Dimensional Insight consists of a stylized blue cube icon to the left of the text "Dimensional INSIGHT". "Dimensional" is in a larger font, and "INSIGHT" is in a smaller, all-caps font below it.
    - Founded in 1989 in Burlington, Massachusetts
    - 2600 customers worldwide
    - 'The #1 business intelligence emerging vendor' (April 2010 Dresner BI market study)
  - The Diver Solution
    - Data integration
    - Data model build
    - Information delivery
-

# The Diver Solution Overview

## Customer Data Environment

Data Sources:

- Flat files
- Proprietary Systems
- ODBC Databases



## DIVER Production Environment

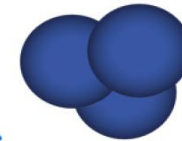
- Data Integrator
  - Extract
  - Transform
  - Load



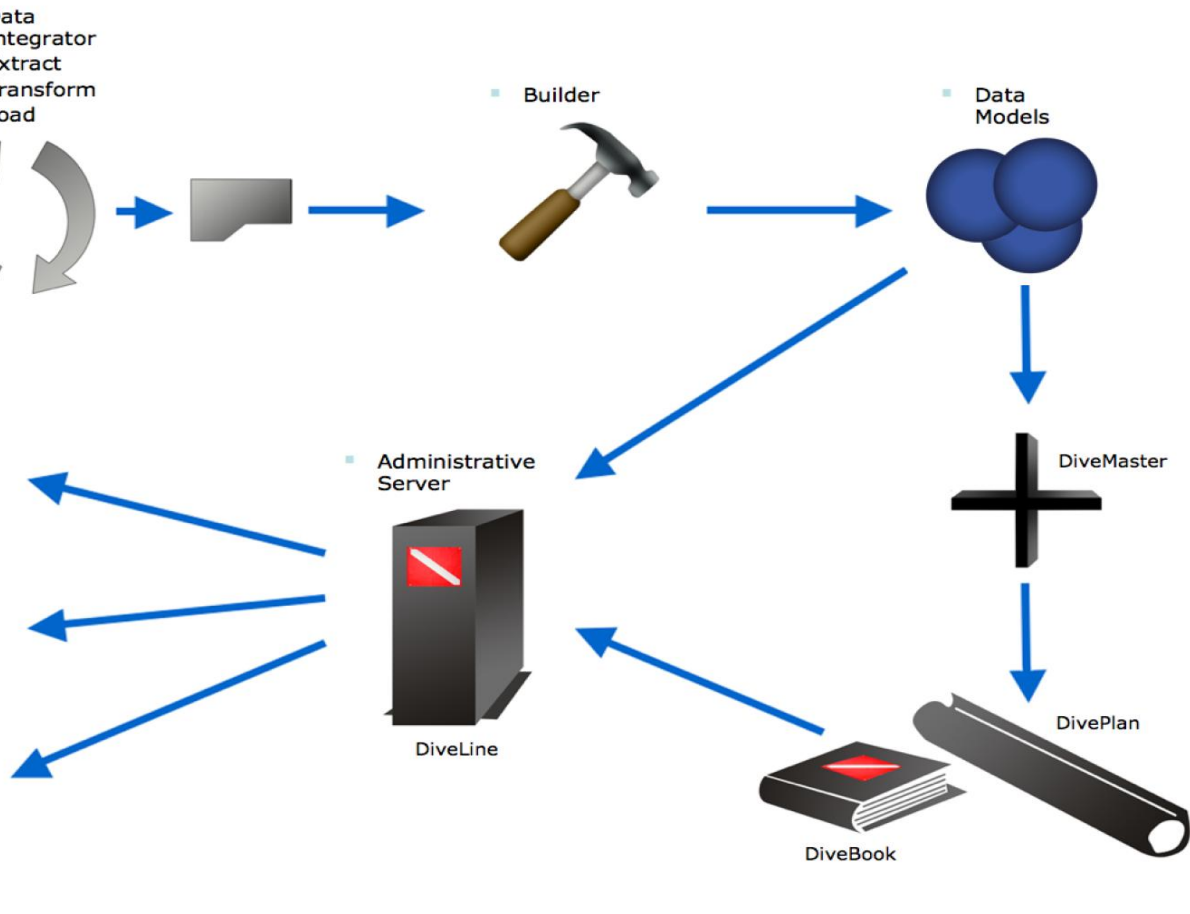
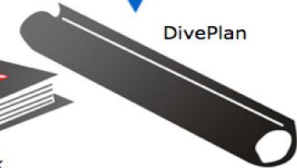
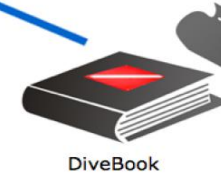
- Builder



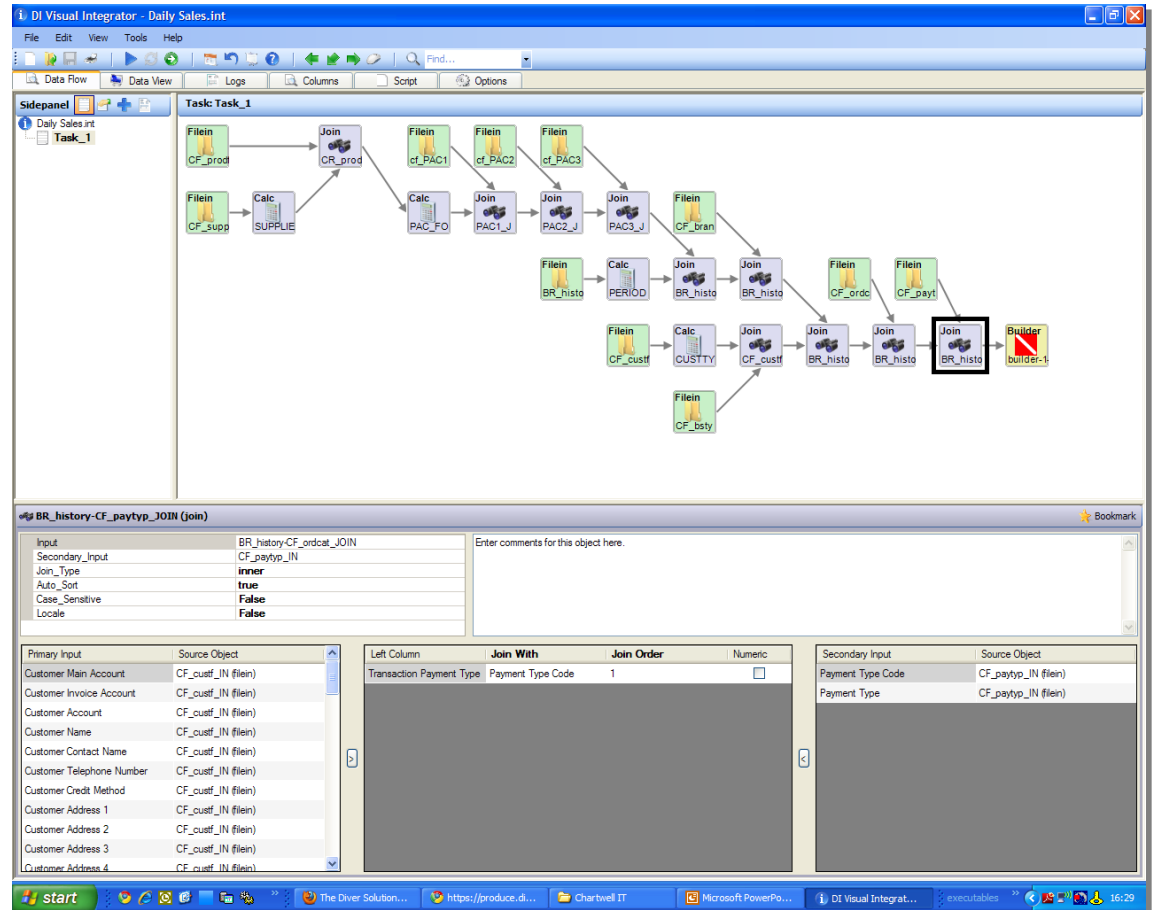
- Data Models



- Administrative Server



- Visual Data Integrator
  - Full ETL toolset
  - Data inputs
    - e.g. CSV, ODBC, SQL
  - Apply business rules
    - Joins
    - Calculations
    - Transformations
    - Substitutions
    - Exclusions



The screenshot displays the DI Visual Integrator interface for a task named 'Task\_1'. The main workspace shows a complex data flow diagram with various components like 'Filein', 'Join', 'Calc', and 'Builder'. Below the diagram, a detailed view of a 'BR\_history-CF\_paytyp\_JOIN (join)' operation is shown.

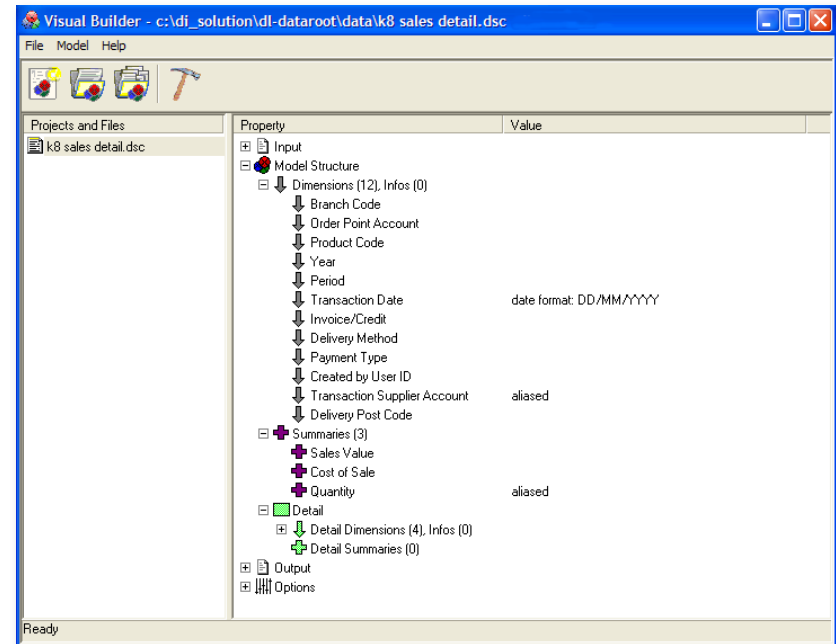
**BR\_history-CF\_paytyp\_JOIN (join) Configuration:**

Property	Value
Input	BR_history-CF_ordcat_JOIN
Secondary Input	CF_paytyp_IN
Join_Type	inner
Auto_Sort	true
Case_Sensitive	False
Locale	False

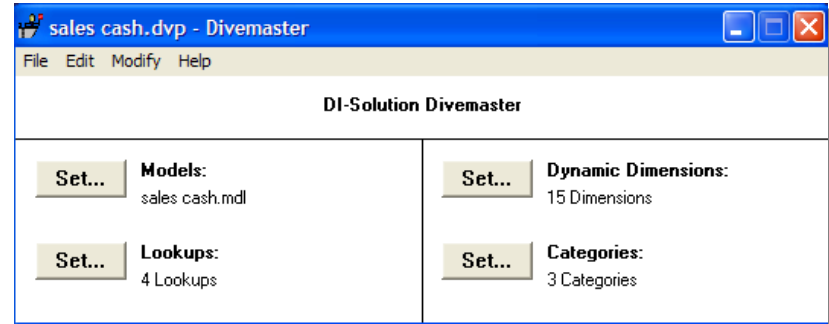
Primary Input	Source Object	Left Column	Join With	Join Order	Numeric	Secondary Input	Source Object
Customer Main Account	CF_custf_IN (filein)	Transaction Payment Type	Payment Type Code	1	<input type="checkbox"/>	Payment Type Code	CF_paytyp_IN (filein)
Customer Invoice Account	CF_custf_IN (filein)					Payment Type	CF_paytyp_IN (filein)
Customer Account	CF_custf_IN (filein)						
Customer Name	CF_custf_IN (filein)						
Customer Contact Name	CF_custf_IN (filein)						
Customer Telephone Number	CF_custf_IN (filein)						
Customer Credit Method	CF_custf_IN (filein)						
Customer Address 1	CF_custf_IN (filein)						
Customer Address 2	CF_custf_IN (filein)						
Customer Address 3	CF_custf_IN (filein)						
Customer Address 4	CF_custf_IN (filein)						

- Visual Data Builder
  - Create Data Models
  - Define 'dimensions'
  - Calculate summaries
  - All dimensions indexed
  - Rapid access to information
  - No hierarchical constraints
  - Total navigational flexibility
  - Converts your raw data into valuable information

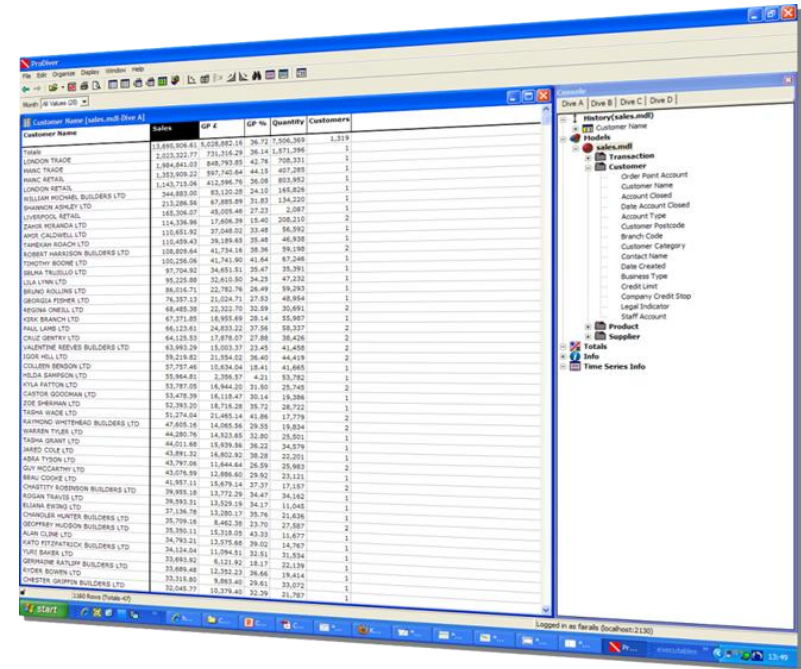


- DiveMaster

- Create DivePlans
- Link models with similar data
  - e.g. Actuals and Budgets
- Perform lookups
- Define dynamic dimensions
- Group dimensions into categories for ease of use

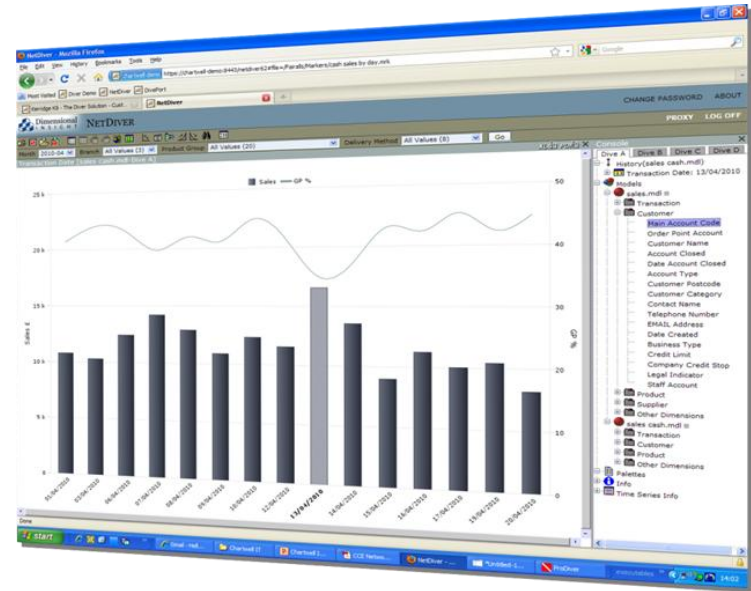


- ProDiver
  - Client-based software
  - Data visualization, analysis and reporting
  - Powerful, interactive interface to access multi-dimensional data
  - Tabular and graphical formats
  - Statistics and user-defined calculations
  - Mapping, grouping, and reporting functions
  - Copy & paste into MS-Office or export to other applications



Customer Name	Sales	GP %	Quantity	Customers
TORAN	15,015,506.41	9,028,882.15	36.72	7,054,369
LONDON TRADE	2,022,322.77	731,214.29	36.14	1,071,396
MANC TRADE	1,884,842.02	849,792.93	43.76	706,331
MANC RETAIL	1,833,939.22	587,746.44	44.11	407,285
LONDON RETAIL	1,143,713.04	412,566.76	36.09	853,952
WILLIAM MICHAEL BUILDERS LTD	344,883.00	81,102.00	24.10	145,824
SHANES ARCADE LTD	145,306.07	49,025.49	37.22	2,087
LIVERPOOL RETAIL	154,336.80	17,466.96	15.40	208,215
DAVID WILANDA LTD	110,651.82	37,548.02	33.48	56,592
MOSE CALDWELL LTD	100,809.44	41,716.16	39.46	46,508
TANDEKHA BEACH LTD	110,459.43	29,189.64	26.44	59,199
ROBERT HARRISON BUILDERS LTD	100,809.44	41,716.16	39.46	46,508
TINDOCHI BOONE LTD	100,236.06	41,741.90	41.64	87,246
BEANA THULLO LTD	97,704.82	24,613.01	25.47	39,391
LILA LYNN LTD	95,225.88	32,410.90	34.23	47,322
BRUND KOLLINS LTD	86,116.71	22,762.76	26.49	39,293
GRONDA PIERRE LTD	76,387.33	21,024.71	27.52	48,964
MEVINA OMSL LTD	68,485.38	22,322.70	32.59	30,691
JOSE BRANCH LTD	67,271.85	18,955.60	28.14	55,907
PAUL LAMB LTD	66,123.41	24,832.32	37.56	58,327
CRUZ GRINITY LTD	64,123.53	17,878.07	27.88	36,426
VALENTINE REYES BUILDERS LTD	63,983.29	13,023.37	20.45	41,454
ISOR HILL LTD	59,219.82	21,954.02	36.40	44,419
CULLEN BENDON LTD	57,797.46	10,834.04	18.41	41,465
HILDA SHAMPSON LTD	55,864.81	2,356.87	4.21	53,782
FLYA FACTON LTD	53,787.05	16,444.20	30.50	28,749
CANTON GOODMAN LTD	53,478.29	14,118.47	26.14	19,386
ZOE SHERRMAN LTD	52,393.20	18,714.28	35.72	28,722
TAMM WIND LTD	51,274.04	21,465.14	41.86	17,779
HARMOND WHITEHEAD BUILDERS LTD	47,405.14	14,965.54	29.55	19,824
WARRIN TULBE LTD	44,880.76	14,823.65	32.80	28,201
TAMBA GRANT LTD	44,611.48	15,879.46	36.22	34,576
JAMES COLE LTD	43,991.32	18,802.92	38.28	22,201
ADNA TYSON LTD	43,797.06	11,444.44	26.59	29,982
GUY MCCARTHY LTD	43,676.59	12,686.60	29.02	23,121
BRAN COOPER LTD	43,657.11	15,679.14	37.37	17,157
ONNETTY ADEBUNSON BUILDERS LTD	39,993.31	13,772.29	34.47	34,162
RODIAH THAVIS LTD	39,993.31	13,529.19	34.17	13,045
CHINDIA HUNTER BUILDERS LTD	35,709.14	8,462.28	23.70	27,587
GEORGE HUNSON BUILDERS LTD	35,709.14	8,462.28	23.70	27,587
ALAN CLINE LTD	35,590.11	15,318.09	43.33	14,767
KEVIN STEPHENSON BUILDERS LTD	34,792.31	13,975.66	39.92	21,824
YURI BAKER LTD	34,134.04	10,994.51	32.51	14,767
GRONDA RATHUP BUILDERS LTD	33,462.82	8,121.92	18.17	22,139
RYDER BROWN LTD	33,462.82	12,323.23	36.46	19,414
CHESTER SHIPPEN BUILDERS LTD	33,318.82	9,863.43	29.61	33,072
1380 Ross Thiam-05	32,448.29	10,378.42	32.29	21,787

- NetDiver
  - Zero-footprint client application
  - Resides on a web application server
  - A bridge between the user's web browser and the Models.
  - Secure web server connection
  - For self-service users not needing full ProDiver functionality
  - The familiar Diver interface in the browser
  - Users can dive, focus, summarize, and save their work.





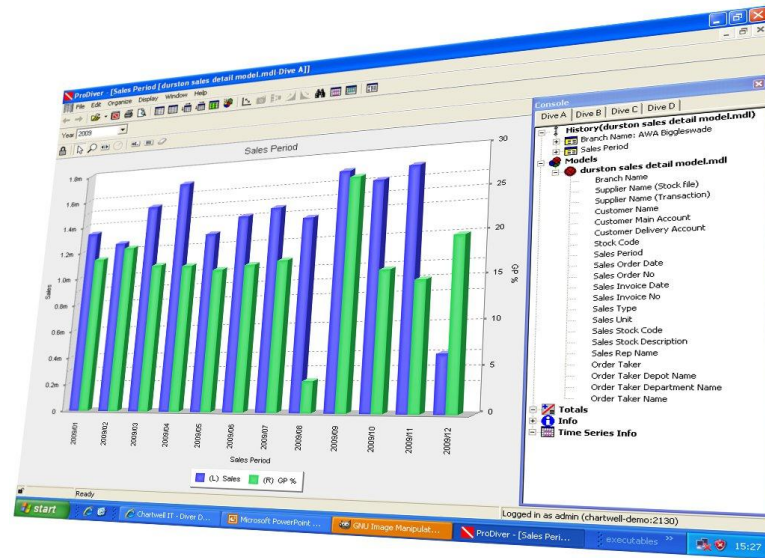
- DivePort
  - Diver's web portal
  - Dashboard development and delivery
  - Enables access to underlying, detailed data using ProDiver and NetDiver
  - Totally customizable
  - User specific
  - External elements - e.g. graphics, web pages



# The Diver Solution Summary

- Flexible

- Sales
- Stock
- Purchases
- Budgets
- Rebates
- Resource Planning
- Management Accounts
- Document Management
- Anything where you have lots of data but need more information



- ‘Named User’ Licensing Model
  - Casual User
    - Diveport
  - General User
    - DivePort
    - NetDiver
  - Advanced User
    - ProDiver
  - Integrator, Builder, DiveMaster, Diveline
    - With initial Advanced Users licenses
  - Volume-based pricing
-

- No obligation trial - 6-8 weeks
  - Temporary User licences free of charge
  - Implementation consultancy - circa 5 days
-

- As flexible as your ideas and requirements
  - Works with virtually any data from any systems
  - Efficient use of server and client hardware
  - No set hierarchies or structures
  - Easy to use
  - Expert support
  - Proven results
-

## Contact for more information -

Peter Wass

07786 747385

[peter.wass@chartwellit.co.uk](mailto:peter.wass@chartwellit.co.uk)

Clint Trigg

07775 167318

[clint.trigg@chartwellit.co.uk](mailto:clint.trigg@chartwellit.co.uk)

[www.chartwellit.co.uk](http://www.chartwellit.co.uk)

---